

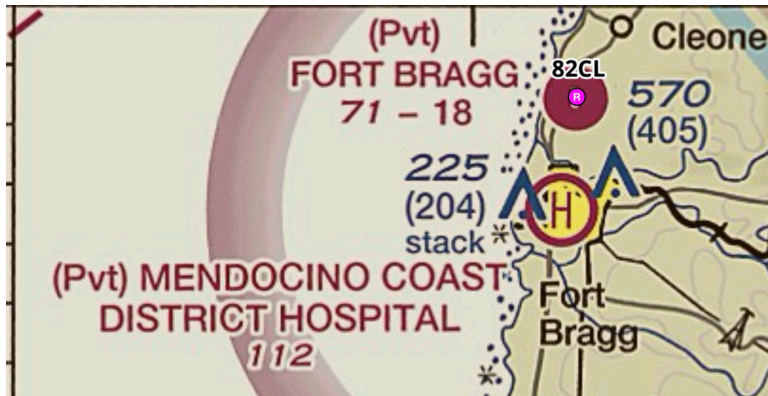
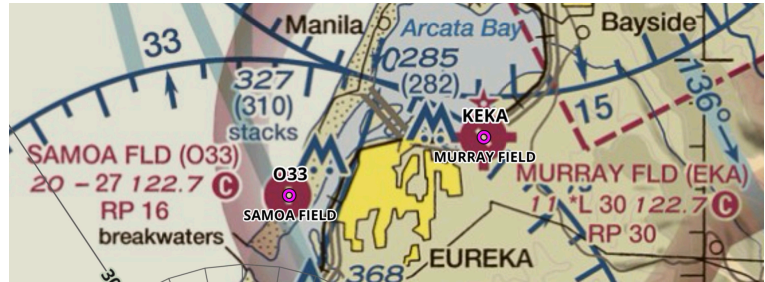
Concerned Aviation Parties and CalPilots Board,

Mother Nature dealt us another warning shot today. Living in California, we are constantly reminded of the hazard earthquakes present. We know that earthquakes have the potential to impact our airport infrastructure through damage to our airfield surfaces.

Today, we experienced a Tsunami Warning - the highest level of alert for a potential disaster. These alerts can vary in severity as well as time to prepare - sometimes it is a matter of minutes, sometimes it may be hours. The airports identified here are critical infrastructure and at risk - the risk, as defined by the SFFD, is anything within 100 feet ASL and within 1 mile of the coast.

The questions we need to ask are many:

What is your airport's emergency and security plan? Does it address a potential tsunami, the preparation for and recovery from one?



Will you simply close the airport and wait for any water to recede?

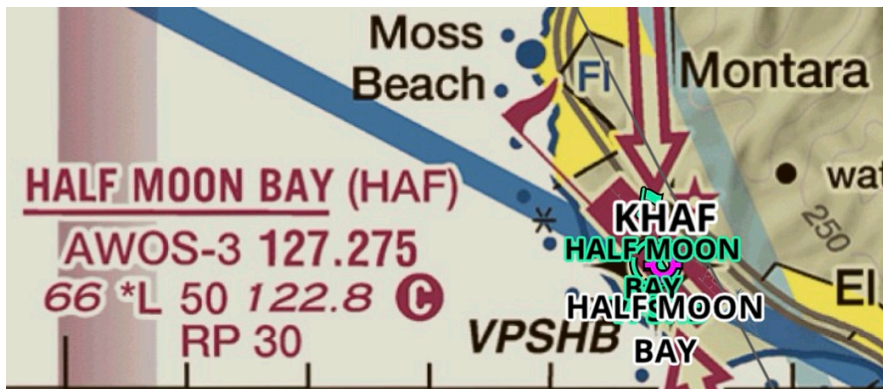
If any, what is your plan for the protection of aircraft and airport infrastructure?

Do you have a plan in place to secure fuel storage to preserve it and prevent fuel from escaping and creating a hazard?

Do you have any equipment on site to address water intrusion - pumps, lights, etc.?

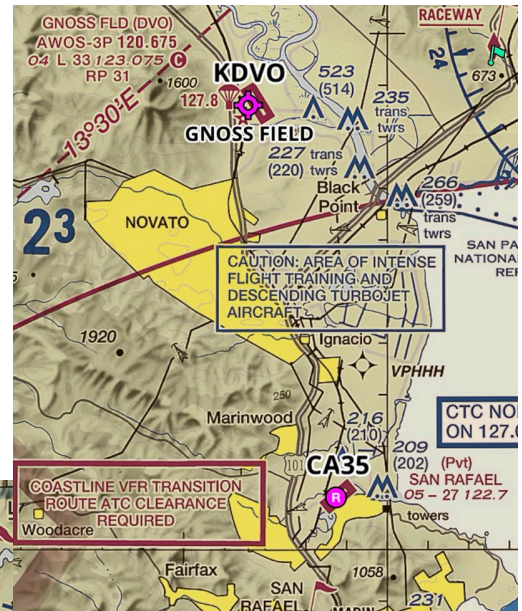
Post tsunami, what is your priority in reopening the airport? Are you prepared to provide support for disaster relief operations?

Does your airport's emergency management office and airport sponsor recognize the critical nature of your airport to the community and the importance of what it can offer after the disaster?



More to the point, will they actively support airport operational recovery with more than words? Will they provide pumps, lights and other assets to assist with reestablishing airport operations?

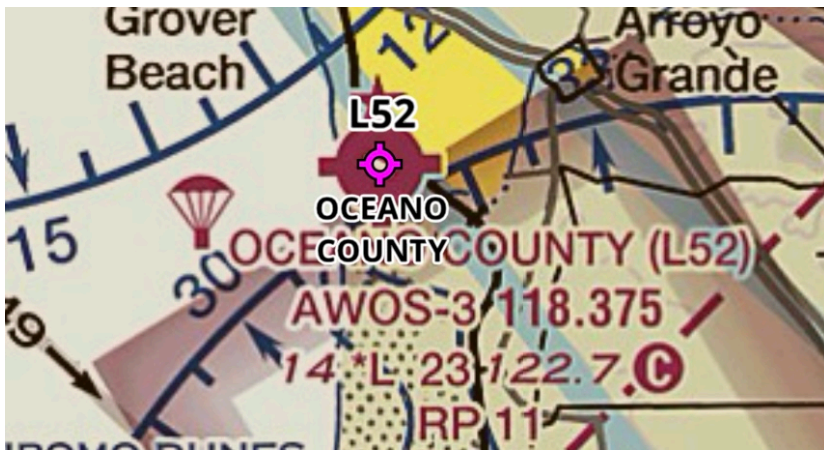
Each of the 18 airports shown in this document is at risk based on the criteria discussed. Whether they have considered this potential previously in their emergency planning or not, this is a risk that we need to ask about. We owe it to those who base aircraft or operate businesses at these airports to ask the question - What can we do to protect their valuable assets?



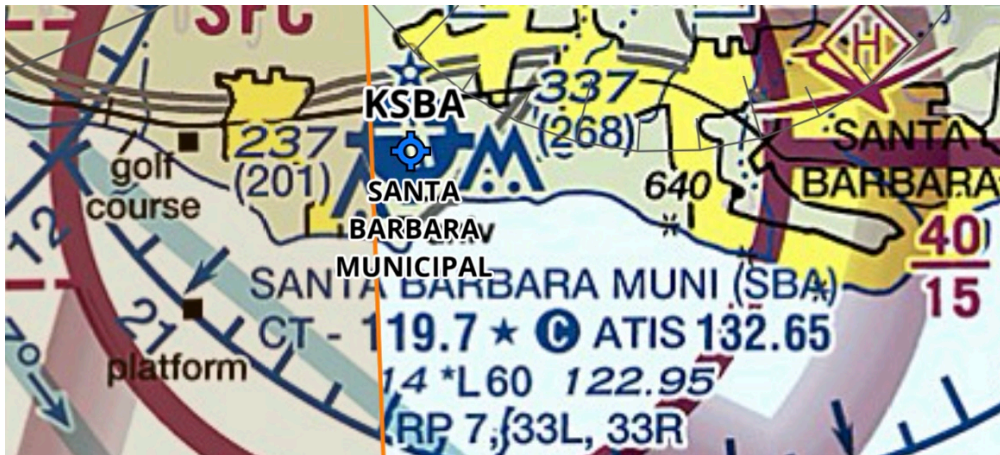
Airports in the Bay Area are already being discussed where "ocean rise" is concerned. PAO has flooded numerous times due to being adjacent to a creek with high water flows.

If a Tsunami occurs in conjunction with high tides, we could easily find these airports inundated with water.





Airports to the south of the Bay Area, while fewer in number, are nonetheless at risk for inundation from large waves. It is incumbent on us to ensure that they have addressed these potential hazards as well.



Thank you for taking the time to consider this information and inquire regarding our airport's preparedness.

Douglas Rice
 Regional Vice-President - CalPilots
FL370machpt80@gmail.com